

TEST CONDITIONS

Test Date	3/16/2023
Test Conductor	Anton Francois +3
Boat Weight as Tested (lbs)	14900
Air Temperature (degrees F)	52
Elevation (ft)	0
Sea State	Calm
Wind Velocity range (mph)	5
Fresh/Salt Water	Saltwater
Fuel Level at Testing (gal)	120

ENGINE SPECIFICATIONS

Number of Engines	3
Engine	V10
Horsepower	400
Cylinders	10
Drive or gear model and ratio	HD Camber 2.08
Mounting Bolt Hole	3,3,3
Engine Height (in)	1.0,1.0,1.0
Engine Setback (in)	1.0,1.0,1.0
Engine Length (in)	25,30,25

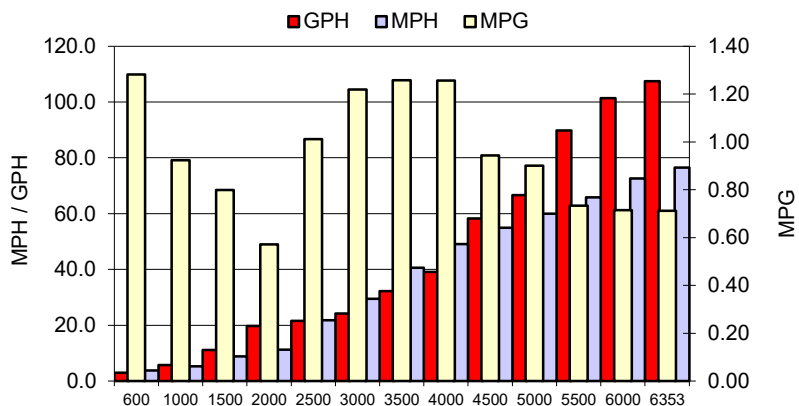
PERFORMANCE SUMMARY

Top Speed (mph @ rpm)	76.5	6353
Acceleration 0 - 20 mph (seconds)	5.76	
Acceleration 0 - 30 mph (seconds)	8.63	

PROPELLER SPECIFICATIONS

Mercury Name	Revolution 4
Material	Stainless Steel
Pitch	29.0,29.0,29.0
Number of Blades	4

PERFORMANCE CURVE



BOAT SPECIFICATIONS

Region/s sold	
Manufacturer	phenom
Website	
Boat Model	34
Boat Type	Offshore Saltwater
Material	0
Length (ft)	33.6
Beam (ft)	10.5
Max hp Capacity	0
Fuel Tank Capacity (gal)	350
Steering Type	Joystick
Dry Boat Weight (lbs)	9700

PERFORMANCE DATA

RPM	SPEED	FUEL CONSUMPTION	FUEL CONSUMPTION	RANGE
RANGE	MPH	GPH	MPG	MILES
600	3.8	3.0	1.28	448
1000	5.3	5.8	0.92	323
1500	8.9	11.1	0.80	280
2000	11.3	19.8	0.57	200
2500	21.8	21.6	1.01	354
3000	29.4	24.1	1.22	427
3500	40.6	32.3	1.26	440
4000	49.1	39.1	1.26	440
4500	54.9	58.2	0.94	330
5000	60.0	66.6	0.90	315
5500	65.8	89.8	0.73	257
6000	72.6	101.4	0.71	250
6353	76.5	107.5	0.71	249
0	0.0	0.0	0.0	0